



FR256N

Edge trimming set

This trimmer is equipped with electronic speed control and an electronic system that keeps the speed constant with a load, enabling you to work with different types of materials. The set includes the edge trimmer, fitted with a CA56U radius trimming head and a large support base for trimming both sides of straight or shaped panels and edge rounding. It also comes with the small V3 round trimming head, which is very practical for trimming with support on edges.



Very easy trimming of either straight or shaped pieces.



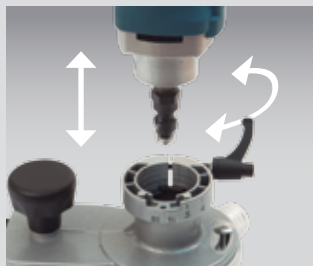
Corner trimming device easy to prepare and to use. When not in use it can be hidden into the base.



Precise guiding for corner trimming.



Adjustable vacuum connection equipped with a bearing brake to prevent leaving marks on the edge.



The new micrometric adjustment system makes it very easy to regulate trimming head height.



V3 round head included with the set.

V3 round head included with the set. Very practical for trimming with support on edges and essential for jobs that require this type of work.

The head includes its own vacuum collector with a brake, and is also supplied with three sliding bases. (With d= 20, 26 and 30 mm holes)

Specifications

Input power: 750 W
Velocidad en vacío: 14.000-30.000/min
Diámetro pinza: 8 mm
Peso: 1,6 Kg



Optional accessoires:

- 1222084 Chuck collet 6 mm
- 1222085 Chuck collet 6.35 mm (1/4")
- 1222024 Chuck collet 8 mm
- 1140123 Carb. bit r=2 mm w/ bearing
- 1140106 Carb. bit r=3 mm w/bearing
- 1140109 Carb. bit r=6 mm w/bearing
- 1140110 Carb. bit r=8 mm w/bearing



Professional solutions